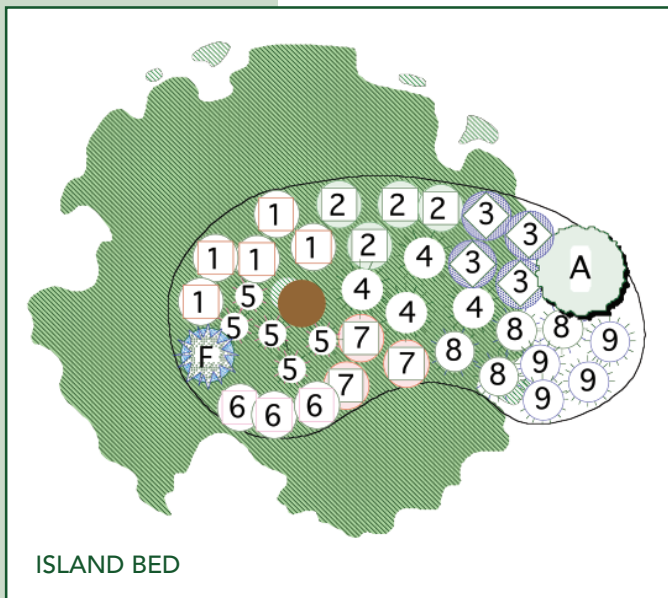




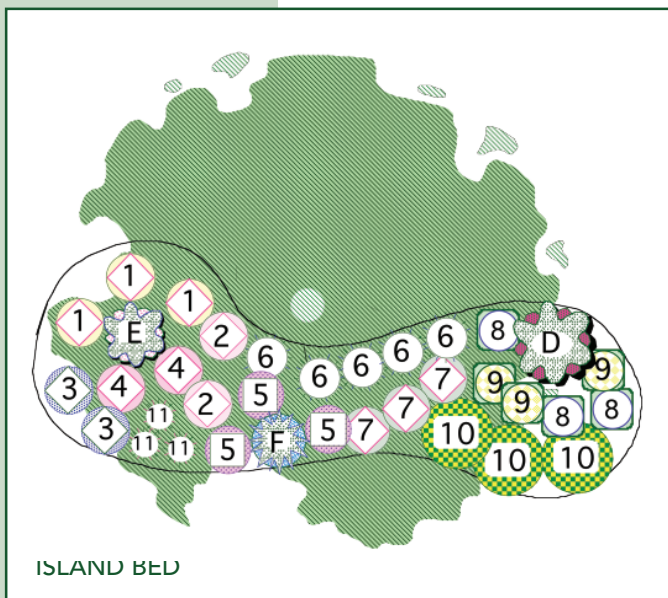
# DESIGNS FOR SHADE



## Set #1

Approximate bed size: 21' 6" x 11' 6"

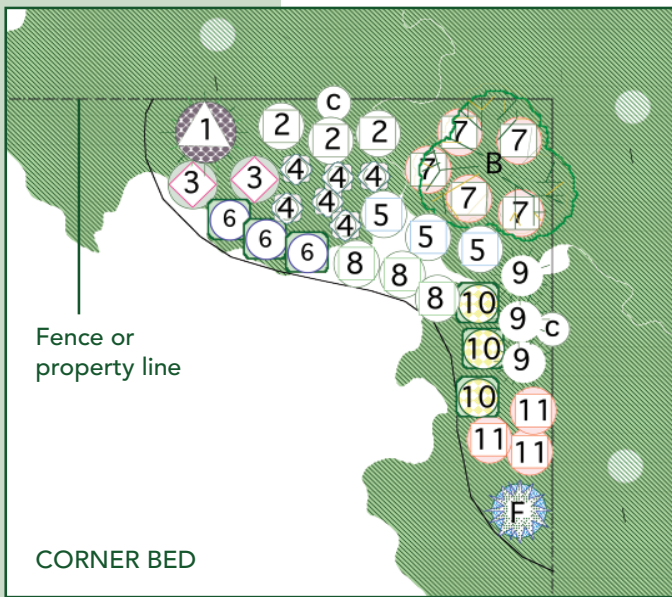
KEY	DRY TO WELL-DRAINED AREA	MOIST TO BOGGY AREA	QTY
1	Epimedium	Mertensia	5
2	Astilbe, Bridal Veil	Fern, American Royal	4
3	Aquilegia	Bergenia	4
4	Hosta, Patriot	Aquilegia	4
5	Dicentra, Luxuriant	Epimedium	5
6	Pulmonaria	Tiarella	3
7	Heuchera, Plum Pudding	Pulmonaria	3
8	Fern, Japanese Painted	Iris, Siberian	4
9	Campanula, Blue Clips	Campanula, Blue Clips	4
A	Hydrangea, Preziosa	Clethra, Hummingbird	1
F	Dwarf Conifer	Leucothoe, Rainbow	1



## Set #2

Approximate bed size: 28' x 10' 2"

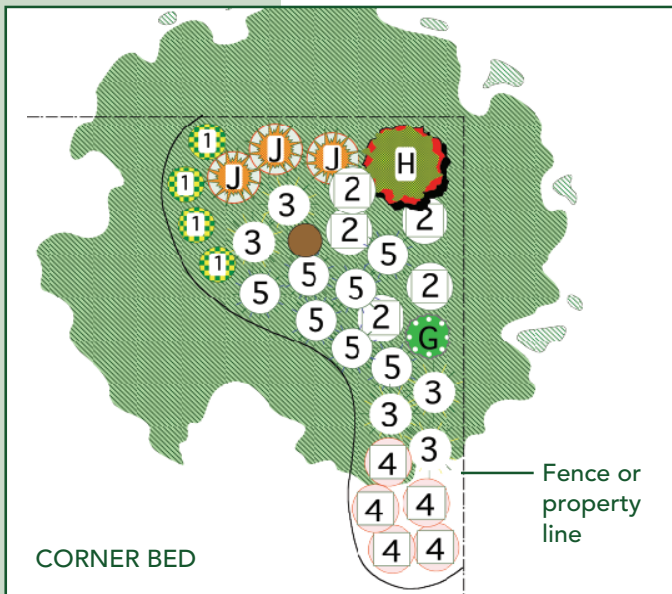
KEY	DRY TO WELL-DRAINED AREA	MOIST TO BOGGY AREA	QTY
1	Cimicifuga	Aruncus	3
2	Ligularia	Ligularia	2
3	Aquilegia	Aquilegia	2
4	Heuchera, Plum Pudding	Lobelia cardinalis	2
5	Astilbe, Pumila	Astilbe, Pumila	5
6	Anemone, Honorine Jobert	Fern, American Royal	5
7	Tricyrtis	Belamcanda	3
8	Helleborus	Iris, Black Gamecock	3
9	Hosta, Patriot	Iris, Yellow Variegated	3
10	Lysimachia	Japanese Forest Grass	3
11	Mertensia	Mertensia	3
D	Hydrangea	Clethra, Hummingbird	1
E	Leucothoe, Rainbow	Leucothoe, Rainbow	1
F	Dwarf Conifer	Itea, Little Henry	1



## Set #3

Approximate bed size: 18' x 22'

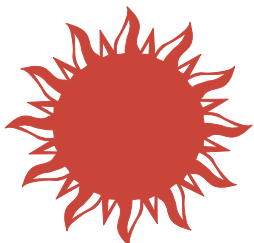
KEY	OPTION A	OPTION B	QTY
1	Cimicifuga	Filipendula	1
2	Anemone, Honorine Jobert	Astilbe, Bridal Veil	3
3	Japanese Iris, Imperial Magic	Tradescantia	2
4	Helleborus	Pulmonaria	6
5	Brunnera	Polygonatum	3
6	Heuchera, Bressingham	Lysimachia	3
7	Iris, Snow Queen	Hosta, Patriot	5
8	Tiarella	Fern	3
9	Hosta, Shade Fanfare	Hosta, Gold	3
10	Alchemilla	Evergold Sedge	3
11	Astilbe, Fanal	Heuchera, Plum Pudding	3
B	Witchhazel	Rhododendron	1
C	Clematis	Clematis	1
F	Dwarf Conifer	Nandina, Gulf Stream	1



## Set #4

Approximate bed size: 13' x 15'

KEY	OPTION A	OPTION B	QTY
1	Evergold Sedge	Alchemilla	4
2	Anemone, Honorine Jobert	Anemone, Honorine Jobert	5
3	Hosta, Blue Angel	Astilbe, Pumila	3
4	Heuchera, Plum Pudding	Astilbe, Fanal	5
5	Fern, Japanese Painted	Tiarella	7
G	Climbing Hydrangea* * If there is not a fence, substitute a shrub Hydrangea	Clematis*	1
H	Andromeda, Mountain Fire	Fothergilla	1
J	Nandina, Gulf Stream	Nandina, Dwarf	3



# SUN NURSERIES

Don't need an entire bed? Simply use our plant lists for companion planting ideas. In Sets #3 and #4, plants from lists A and B may be mixed and matched for a personalized design.

14790 Bushy Park Road · Woodbine, MD 21797  
 (410) 442-2090 · (301) 854-6107 · (301) 829-3300  
 Fax (410) 489-9578 · [www.sunnurseries.com](http://www.sunnurseries.com)